

BELLVER OAKS
BELLVER PARK PROPERTIES S.L

JAIME SALVÀ / ARCHITECTURE & INTERIOR DESIGN



QUALITY SPECIFICATIONS

THE FOUNDATION

- The foundation is composed of reinforced concrete footings and braces according to structural calculation and permissible land tension
- Basement walls are reinforced concrete

THE STRUCTURE

- Mixed structure composed of horizontal slabs, reinforced concrete pillars and structural metal reinforcement elements.

CLOSURES

- The Facade enclosures are composed of H-16 ceramic brick factory wall taken with 1: 4 portland cement and sand mortar, 50mm thick exterior thermal insulation and inner plasterboard sheets on two plates of 13mm. The Execution Project will detail and confirm these specifications.

INTERIOR WALLS

- Interior partition of plasterboard through vertical structures of 70mm thick every 40 cm, a double plate on each side for acoustic insulation.

FACADE AND OUTDOOR CARPENTRY

- Exterior carpentry facades in Anthracite Grey Aluminum Technal Soleal Brand, Minimal or similar.
- Double Glazed glass with argon in chamber (two panels separated by dehydrated air chamber), formed by "Stadip Physical Security" 4 + 4 (safety glass composed of two 3mm panels and intermediate butyral), intermediate air chamber 12 mm and "Stadip Physical Security" 4 + 4 (safety glass consisting of two 3 mm panels and intermediate butyral)
- Balcony railings and safety glass terraces according to regulations.

INTERIOR CARPENTRY

- Interior carpentry in lacquered matte white wood and/or oak veneer.

WARDROBES

- Wardrobe fronts in lacquered matte white wood and/or oak veneer.

BELLVER OAKS
BELLVER PARK PROPERTIES S.L

THERMAL INSULATION ROOF AND BALCONIES

ROOF AND BALCONIES

- Thermal roofing insulation with a combination of 10cm thick extruded polystyrene plates and Würth multi-thermal reflective thermal sheet.
- Thermal insulation on balconies by Würth multi-thermal reflective thermal film.

COMMUNITY STAIRCASE

- Semi-exterior staircase with slats, concrete slab and iron railing. Staircase in natural stone type Balearic Grey or Similar.

LIFT

- Elevator access to all homes and basement

PAINT AND COATINGS

- Facade finish is a coloured plaster system with coloured porcelain veneered fronts according to accompanying images.
- White plastic interior paint

ELECTRICITY

- According to RITE Gira E2 type mechanisms or similar

HEATING AND CLIMATE CONTROL

- Areothermal energy system for underfloor heating, hot water and A/C

TELECOMMUNICATIONS AND ALARM

- TV antenna, satellite dish and cable with out-puts in all units. Video intercom and alarm in all homes.

ILLUMINATION

- According to RITE. Diffuse lighting by LEDs in the ceiling on a dimmer system

BELLVER OAKS
BELLVER PARK PROPERTIES S.L



JAIME SALVÀ / ARCHITECTURE & INTERIOR DESIGN

QUALITY SPECIFICATIONS

Calle Camilo José Cela nº7, PALMA

BELLVER OAKS
BELLVER PARK PROPERTIES S.L



JAIME SALVÁ / ARCHITECTURE & INTERIOR DESIGN

QUALITY SPECIFICATIONS

Calle Camilo José Cela nº7, PALMA

BELLVER OAKS
BELLVER PARK PROPERTIES S.L



JAIME SALVÁ / ARCHITECTURE & INTERIOR DESIGN

QUALITY SPECIFICATIONS

Calle Camilo José Cela nº7, PALMA

BELLVER OAKS
BELLVER PARK PROPERTIES S.L



JAIME SALVÀ / ARCHITECTURE & INTERIOR DESIGN

QUALITY SPECIFICATIONS

Calle Camilo José Cela nº7, PALMA

BELLVER OAKS
BELLVER PARK PROPERTIES S.L



JAIME SALVÀ / ARCHITECTURE & INTERIOR DESIGN

QUALITY SPECIFICATIONS

Calle Camilo José Cela nº7, PALMA



BELLVER OAKS
BELLVER PARK PROPERTIES S.L



JAIME SALVÀ / ARCHITECTURE & INTERIOR DESIGN

QUALITY SPECIFICATIONS

Calle Camilo José Cela nº7, PALMA

BELLVER OAKS
BELLVER PARK PROPERTIES S.L

FLOORS AND SKIRTING BOARDS

- Interior floor combination of Natural Stone type "Balearic" or a similar stone
- Light oak or a similar laminated wood
- Natural Stone terrace floors type "Balearic" stone or a similar in non-slip finish
- Skirting board in the same material

TILES

- Natural Stone tiling in wet areas type "Balearic" stone or similar

SHOWER

- Transparent Glass Screens and doors

MIRRORS

- Anti-fog mirrors in bathrooms

BELLVER OAKS
BELLVER PARK PROPERTIES S.L

COMMON AREAS

- PEDESTRIAN ENTRY

- Aluminium entrance door with automatic opening
- Video intercom
- Natural stone floors in "Balearic" stone or similar
- Walls with natural "Santanyí" stone or similar
- Natural wood ceilings
- Planter with natural "Santanyí" stone or similar
- Led lighting under planter and in false ceilings
- Natural wood slats



QUALITY SPECIFICATIONS

Calle Camilo José Cela nº7, PALMA

UNDERGROUND. PARKING

- Automatic natural wood finish entrance door
- False ceiling entrance to the parking with led lighting
- Indoor floor of the underground parking is polished concrete and paint to indicate each parking spot on the floor, walls and ceilings
- Interior walls in concrete
- Interior ceilings in concrete
- Led lighting design to indicate each allocated parking spot
- Garbage disposal room

- COMMON AREAS AND TECHNICAL ROOMS

- Polished concrete floor in common areas
- Perimeter walls in concrete
- Machine room divisions composed of H-16 ceramic brick factory wall and coated with cement and paint mortar
- Machine rooms polished concrete floor

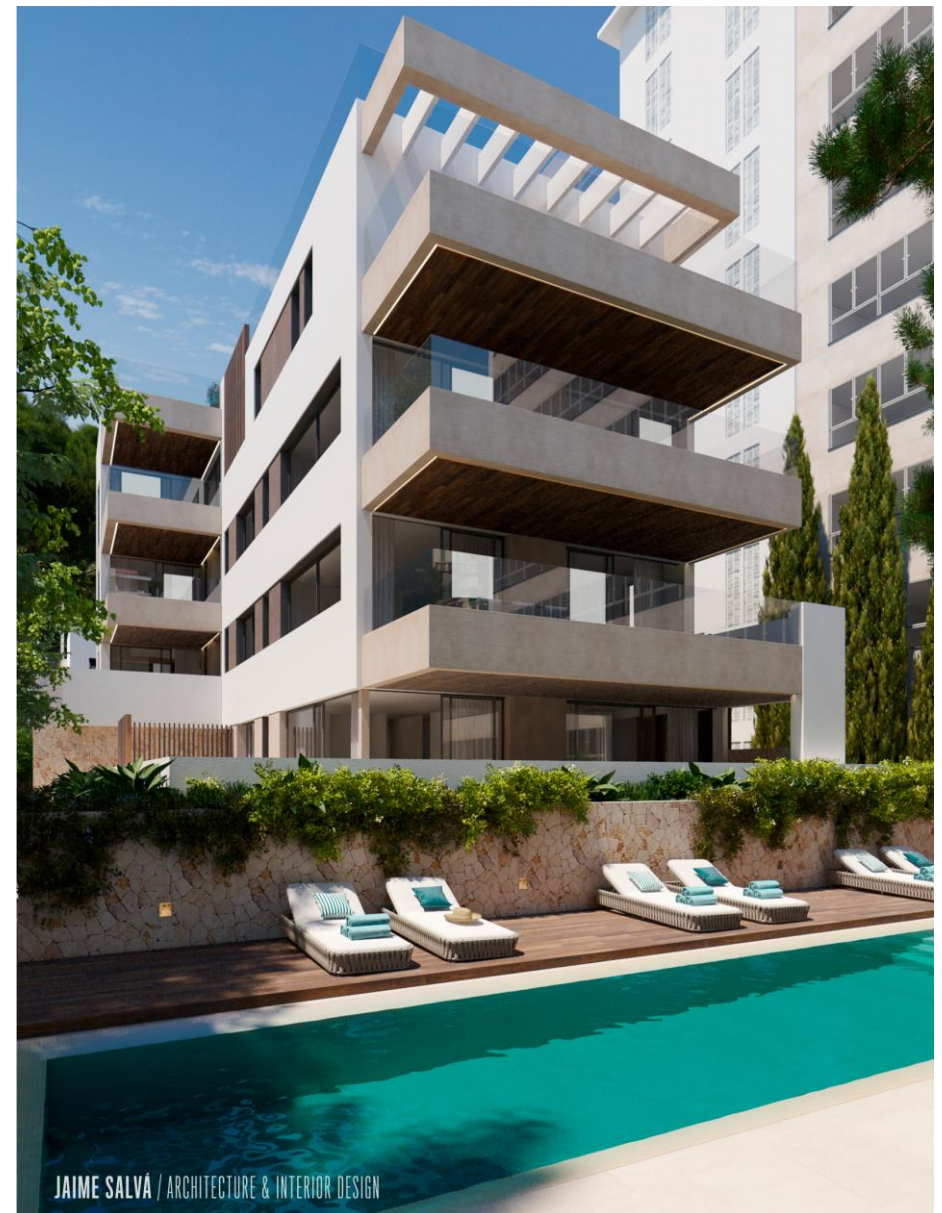
- STORAGE ROOMS

- Polished concrete floor
- Colour painted walls
- Machine room divisions composed of H-16 ceramic brick factory wall and coated with cement and paint mortar

BELLVER OAKS
BELLVER PARK PROPERTIES S.L

SWIMMING POOL

- Wood tile decking around pool
- Green mosaic tile finish inside pool
- Led beacon lighting
- 3.14 x 11.67. Total 36,65m2 Pool



QUALITY SPECIFICATIONS

Calle Camilo Jose Cela nº7, PALMA

BELLVER OAKS
BELLVER PARK PROPERTIES S.L



QUALITY SPECIFICATIONS

Calle Camilo José Cela nº7, PALMA

BELLVER OAKS
BELLVER PARK PROPERTIES S.L

CARPENTRY IN KITCHEN

- Custom made kitchen cupboards in anthracite grey lacquered wood and oak veneer or similar with integrated handles. Silestone countertop and kitchen bar top

HOME APPLIANCES

- Oven, fridge, dishwasher and cooker Induction hob SIEMENS Brand or similar.

SANITARY AND FAUCETS

- DURAVIT brand toilets or similar
- Single lever ICONIC or similar faucets. Built-in faucets in bathrooms, rain-shower ceiling showers and wall-mounted hand shower with single lever and temperature control

BATHROOM FURNITURE

- Cupboards for washbasins made of natural oak or similar wood and countertop with shelves and handles included
- Electric towel radiators

BELLVER OAKS
BELLVER PARK PROPERTIES S.L

PENTHOUSE

- Pool on concrete terrace floor
- Barbecue area and sink
- Metal staircase to access private terrace



QUALITY SPECIFICATIONS

Calle Camilo José Cela nº7, PALMA

LIST OF EXTRAS

- Walls lined with stone or wood
- Pergolas and vaporisers for penthouses
- Outdoor kitchen and barbecue on the terraces of the Penthouses
- Electric shutters
- Windows with sun protection on glass
- Recharging points for electric cars in parking
- Bioethanol fireplace
- Home automation: lighting control
- Sonos Music System integrated throughout the home
- Security cameras
- Osmosis drinking water system
- Furniture
- Possibility of higher quality kitchens than those included in the price
- Underfloor heating in shower trays
- Superior quality faucets in bathrooms and kitchen
- Organic waste crusher in the kitchen sink
- Possibility of installing a jacuzzi in the ground floor apartments
- Garden planning for the ground floor apartments
- Showers equipped with hot water in the gardens of the ground floor apartments
- Irrigation system in the gardens of the ground floor apartments

- Nota: Technical and Quality Specifications included in the sale price are seen in previous documents to this. Possibility of modifications here on the List of Extras is depending on each client.

BELLVER OAKS
BELLVER PARK PROPERTIES S.L



JAIME SALVÁ / ARCHITECTURE & INTERIOR DESIGN

QUALITY SPECIFICATIONS

Calle Camilo José Cela nº7, PALMA